

BORDER CANCER CARE COORDINATION PROJECT (BCCCP)

*'The potential for excellence when
collaboration is genuine'*

Successful cancer support across
borders

Cancer support across borders

➤ Albury-Wodonga

- 75,000 urban
- 200,000+ referral pop
- 60% Vic
- 40% NSW



Cancer support across borders

Issues

- No large public hospitals with salaried cancer specialists
- Service funding state and sector based (mostly stopping at the border)
- Differing state cancer frameworks, plus federal framework

Border Cancer Care Coordination Project

- Uniquely placed to research a model of integrated care
 - Public and private mix
 - Federal and state jurisdictions
 - Community and acute services

Border Cancer Care Coordination Project

Streamlining support & evidence based Cancer Care Coordination

- Multidisciplinary approach
- What works in a regional / rural context
- 'Sustainable model – CCC as 'Navigator'

Multidisciplinary team meetings

- Design a sustainable regional model
- Critical success factors
- Evaluation of benefits to clinicians/patients

Border Cancer Care Coordination Project

Data and information

➤ Website development

- Workgroups for health professionals
- Local service directory
- Information about local cancer events / information

➤ ‘Snap shot’ of integrated cancer data

- Compilation of data from two public state cancer registries and data from privately funded services to reflect actual service provision

Border Cancer Care Coordination Project

➤ Key outcomes

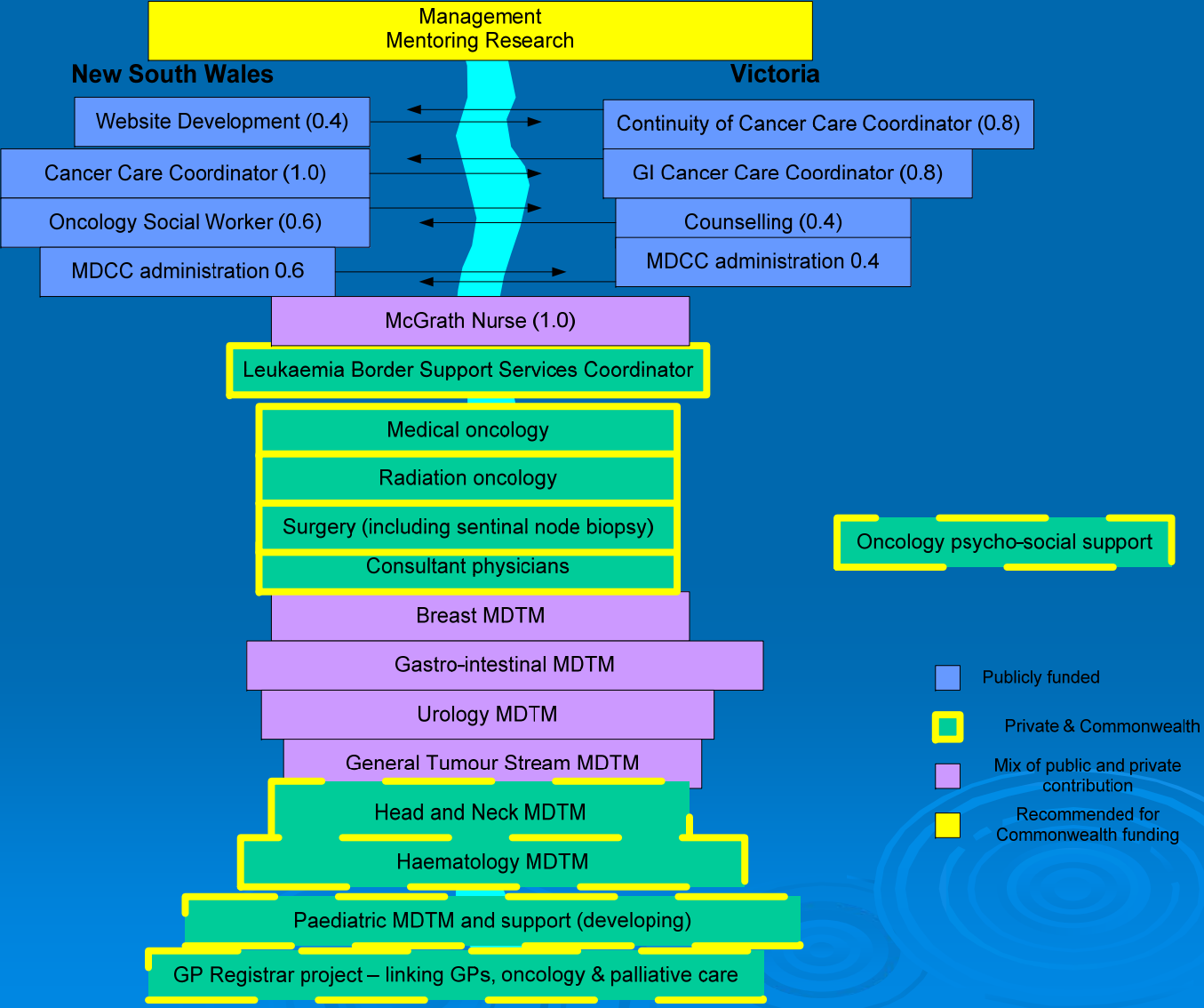
A collaborative model of care works

- Local governance - Steering Committee
 - Effective due to strategic and committed membership
- Local Governance model supported by External advisory group
- Multidisciplinary Team that works from the same centre works more collaboratively and is patient focussed rather than organisational focussed.
- Improved patient outcomes

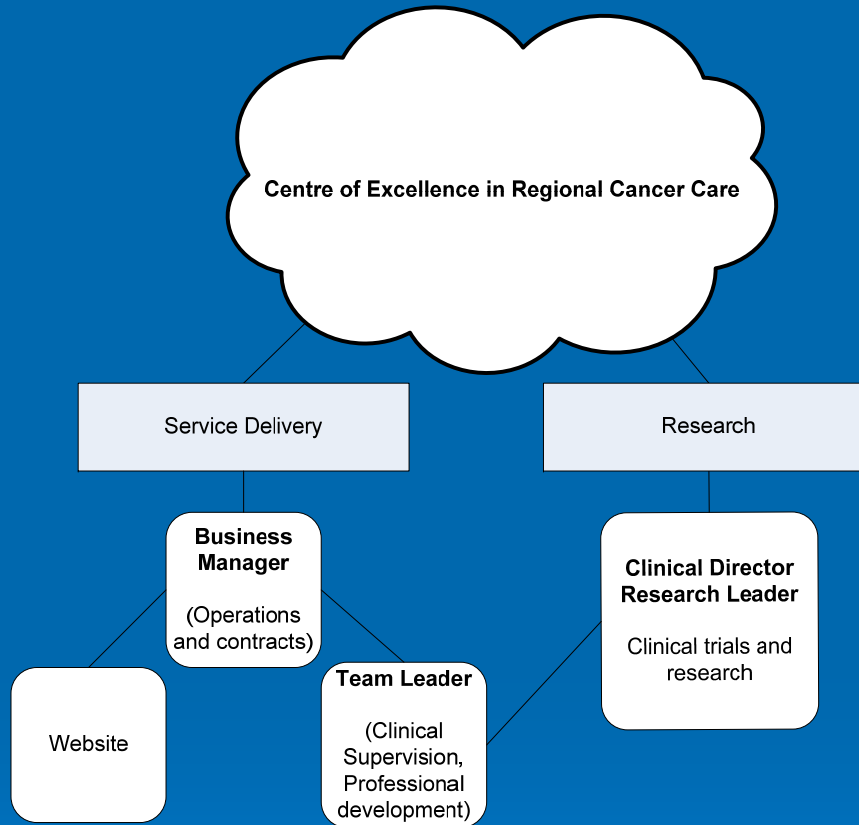
Border Cancer Care Coordination Project

- External Review (C-CORE/Michael Barton)
 - The major achievements of BCCCP were
 - Improved patient care and experience
 - Establishment of care coordination in a regional centre
 - Successful trialing of non-nursing CCCs
 - A model of cross-border care coordination
 - “BCCCP appears to have been an excellent implementation of cancer care coordination in a regional setting. The final report accurately portrays the aims, methods and results. It may take years to measure full benefits and assess sustainability”

Border Cancer Collaboration



Border Cancer Collaboration



Border Cancer Collaboration

A joint venture comprising:

Greater Southern Area Health Services (Albury Base Hospital and Albury Community Health)

Wodonga Regional Health Service

Upper Hume Community Health Service

Border Medical Oncology Clinical Trials Unit

Ramsay Health

Hume Regional Integrated Cancer Services

Upper Hume Community Health Service
www.uhchs.vic.gov.au

Border Cancer Collaboration
www.bordercc.com

