



## ***Population Health Planning***

### **A Sub Regional Approach**

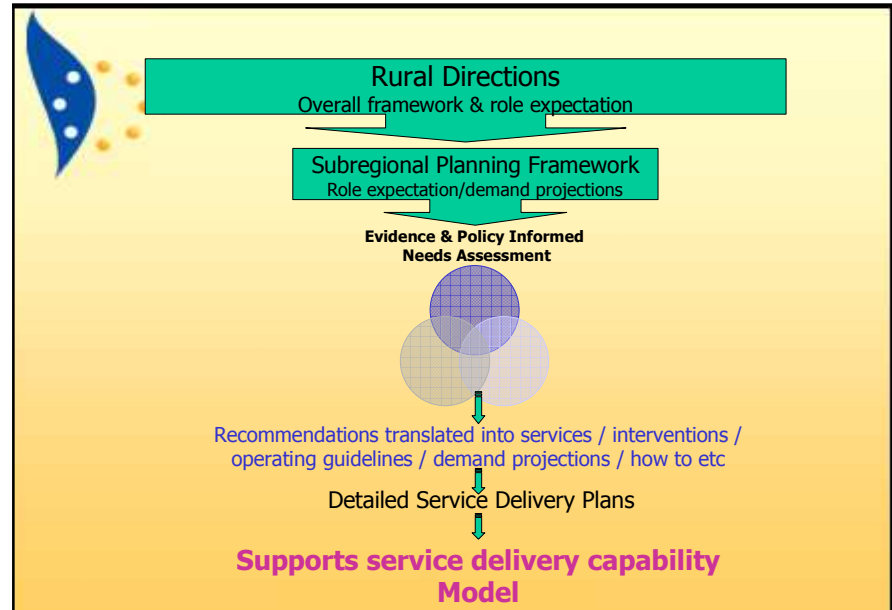


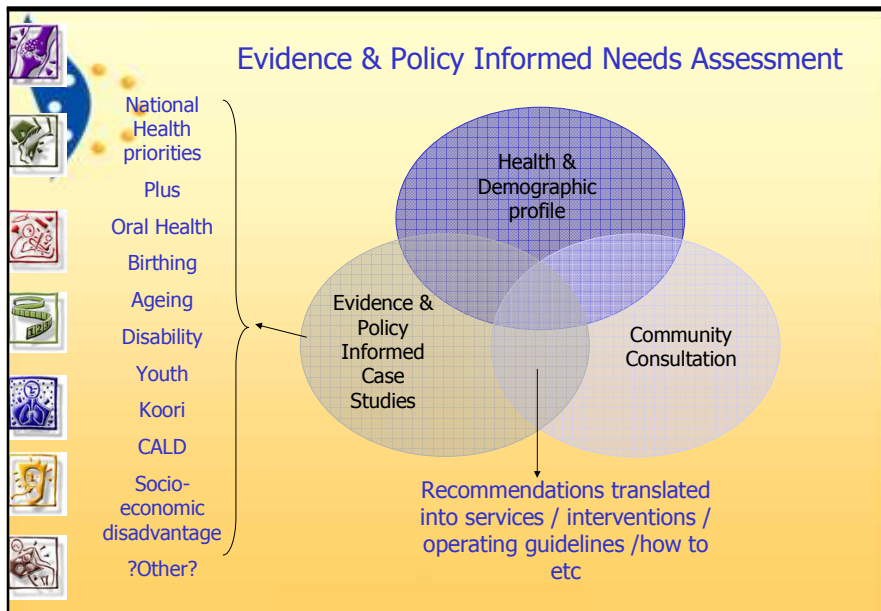
## **Strategic Goal**

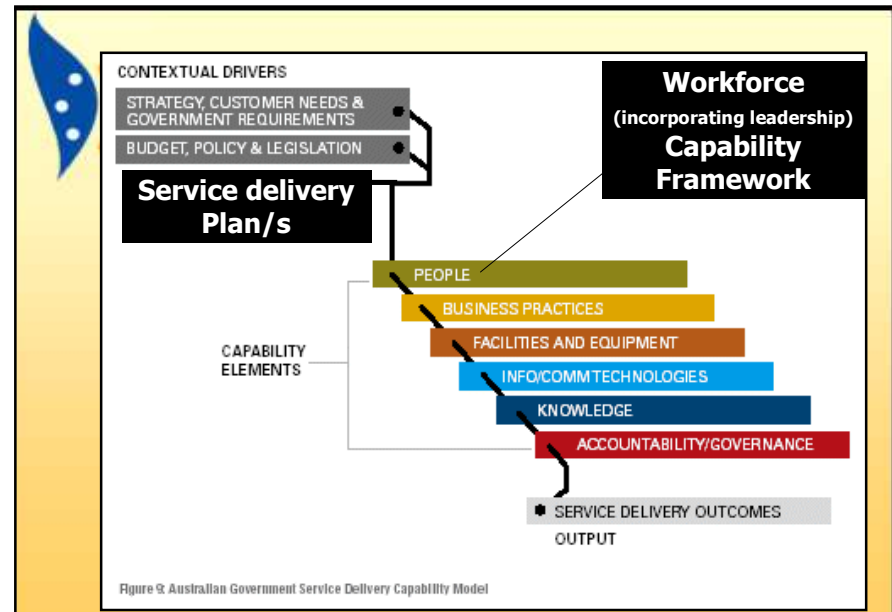
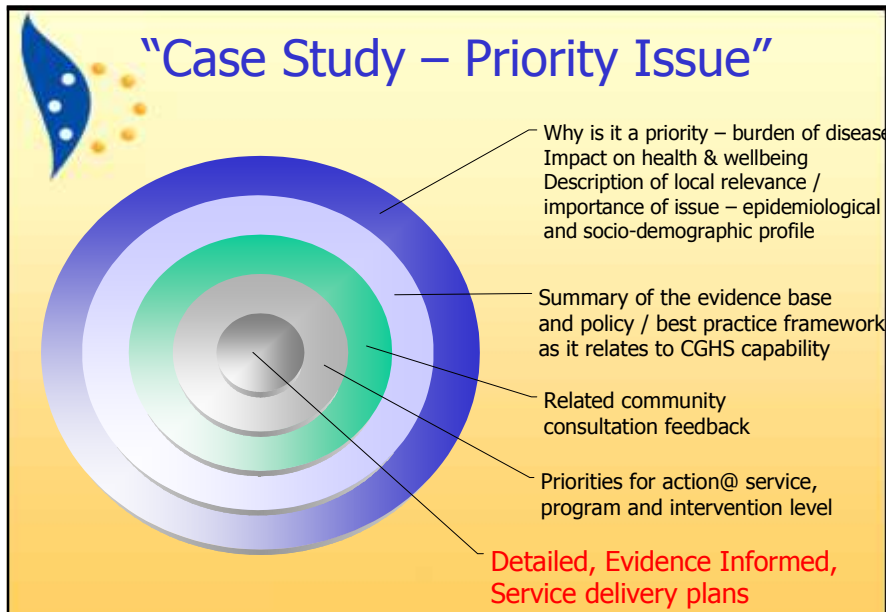
• adopt a population health approach to health service planning and delivery.

### **Objectives:**

- Maintain and improve the health and wellbeing of our entire population.
- Provide the range of services and interventions with the greatest potential to improve health and wellbeing and reduce inequities between population groups.
- Within a social justice framework support community defined need and service prioritisation.
- Contribute to the evidence base relating to subregional population health planning and evaluation.









## THE FERAL EYE

by Terry Sedgwick



"All my life people have been telling me to go and get help. Today old Farmer Kitchell, even though his leg was pinned under a tractor, said "Skippy! Quickly, go get help!" So here I am.